

CAR 10

1971 Chevy Step Van Special Operations Support Vehicle HIGH ANGLE

300' LIFE SAFETY ROPES, 200' LIFE SAFETY ROPE,
100' UTILITY ROPE, REPEL HAR-
NESSES, FULL BODY HARNESS
ATTACHMENTS, ROOF



ROLLERS, MAST SLING, JUNCKIN STOKES LITTER,
HARDWARE BAG, LOCKING STEEL CARABINERS
ANCHOR STRAPS, PICK-OFF STRAPS, 4" PULLEYS,
PRUSIC MINDING PULLEY, 540 BELAY, 5" HOSE
EDGE PROTECTOR, GIBBS ASCENDERS, HAND AS-
CENDERS SWIVEL, TRI-LINK, FALL ARRESTOR, FIG-
URE 8, BRAKE BAR (RACK), ASSORTED LENGTHS OF
WEBBING & PRUSIC CORD

CONFINED SPACE

300' AIR HOSE, 10 MINUTE ESCAPE PACKS, 1 HOUR
SCBA BOTTLES, AIR CART, LOCK-OUT KIT, HELMET
LIGHTS, CLC KNEE PADS, BUMP CAPS

WATER RESCUE

MUSTANG ICE COMMANDER SUIT, IMMERSION SUIT,
RESCUE CAN, SWIFT WATER HELMETS
300' WATER RESCUE ROPE, LIFE VESTS, LIFE VEST
HARNESSES, HORSE-COLLAR LIFE VEST
MASKS, SNORKELS, FINS, BOOTIES, GLOVES

HAZ-MAT

CHEM-TAPE, ENCAPSULATING LEVEL B SUITS,
OVER-BOOTIES, NITRYL GLOVES
DECON BRUSHES, SPRAY WANDS, FLUID TRANSFER
PUMP, 25' GARDEN HOSE
DISPOSABLE 5 GALLON PLASTIC CONTAINERS,
OVERHEAD SHOWER ASSEMBLY
MARK 1 KITS, SPILL CONTROL KITS, DISPOSABLE
HOSPITAL DECON SYSTEMS
15 GALLON DRUM, WALKERS, FREESTANDING DE-
CON SHOWER ASSEMBLY
BUNDLES OF DRY ABSORBENT PADS, 5 GALLON
PAIS, 55 GALLON OVER PACK DRUM
PACKAGE OF HAZARDOUS WASTE LABELS,
TYVEK SUITS, SARANEX /C SUITS, TYCHEM SL SUITS,
CONTAINMENT POOL,
CHEMICAL PROTECTIVE CLOTHING GUIDE

The *Bureau of Special Operations* is comprised of 18 members of the department's Career Division who are trained as Emergency Medical and Hazardous Materials Technicians. Members complete an average of 1,500 man-hours annually in advanced rescue training including Confined Space, High Angle, Ice and Water Rescue. Named as the primary support unit to the Middlesex County Hazardous Materials Unit for Mass Decontamination response, the Special Operations Bureau has been actively involved in training additional departments throughout Middlesex County in this operation.

Members have received additional advanced training through various agencies nation-wide including:

- US Department of Justice
- US EPA
- New Jersey State Police
- New Mexico Technical Institute
- Texas A & M University
- Bechtel, Nevada Nuclear Terrorism
- Anniston, Alabama Chemical Weapons Emergency Response Training
- US Coast Guard

FOR EMERGENCY RESPONSE

Contact

Perth Amboy Communications Center
732-442-4400

Provide following information:

Incident Type

Incident Location

On Scene Contact (Name & Phone Number)

Radio Frequency for Contact

Department Administration:

Wilda Diaz, Mayor

William J. Barcheski, Deputy Chief

Captain David J. Volk, Administration/Training

Special Operations Bureau:

Battalion Chief Steven Vargo—Bureau Commander

Battalion Chief Robert Kuchie—Deputy Commander

FF. Robert Wisneski—Training Coordinator

FIRE HEADQUARTERS

375 New Brunswick Avenue
Perth Amboy, New Jersey 08861
Phone: 732-324-3500

Perth Amboy Fire Department Bureau of Special Operations



Rescue 1

2001 Ford 450
Custom Rescue Body

EQUIPMENT INVENTORY

ON-BOARD COMPUTER UPS & CAD INTERFACE
HAZ-MAT REFERENCE SOFTWARE
PORTABLE CELL PHONE
ANIMAL NOOSES, CLASS 4 TRAILER HITCH,
TRAILER HITCH EXTENSION
9000 LBS WINCH, 26' FOLDING LADDER
ASSORTED COLOR LIGHT STICKS, HONDA 3500
GENERATOR, 100' ELECTRICAL REEL
AIR SYSTEM OFF THE REAR OF THE RIG



HIGH ANGLE

JUNCKIN STOKES LITTER, SKED,
100' UTILITY ROPES, 100' SEARCH ROPES, 200' LIFE
SAFETY ROPE W/ BAGS
REPEL HARNESSSES, FULL BODY HARNESS AT-
TACHMENTS
SHORT HAUL KIT, VERTICAL / HORIZONTAL
RIGGING KIT
SHORT PIECES OF HOSE (EDGE PROTECTION)
4" PULLEYS, PRUSIK TENDING PULLEY, FIGURE 8,
BRAKE BAR (RACK), 540 BELAY
LOCKING STEEL CARABINERS, HAND ASCEND-
ERS, GIBBS ASCENDERS, FALL ARRESTOR
PICK-OFF STRAPS, ANCHOR STRAPS, ASSORTED
SIZES OF PRUSIK CORDS & WEBBING

WATER RESCUE

IMMERSION SUITS, 300' WATER RESCUE ROPE,
THROW RING WITH 75' OF ROPE
RESCUE CAN, SOFT RESCUE FLOTATION DEVICE,
SETS OF ICE RESCUE PICKS
ICE ANCHORS, LIFE VESTS, PAIRS OF FINS,
MASKS, SNORKELS, KNIVES
STROBE LIGHTS, GLOVES, HARNESSSES FOR LIFE
VESTS
50' THROW ROPE IN BAG, SKED LITTER WITH
FLOTATION & BACKBOARD

EXTRICATION

VEHICLE LOCK SLIM-JIM WITH WEDGE, WINDSHIELD
CUTTER, SAWZALL (ELECTRIC), 4' HYDRAULIC JACK,
12 PIECE IMPACT SOCKET SET + 9 ASSORTED SIZE
SOCKETS, AIR HAMMER CHISEL, IMPACT GUN, AIR
RATCHET, AIR GRINDER, AIR SPRAYER
O2 TORCH KIT, ROAD FLARES, HYDRAULIC HAND
PUMP, HYDRAULIC SPREADER, HYDRAULIC CUTTER,
HYDRAULIC RAM, 1 1/2 TON COME-A-LONG, 20 TON
BOTTLE JACKS, STEP CHOCKS, 4.0 HONDA HYDRAU-
LIC PUMP, ROCKER PANEL SUPPORT BRACKET FOR
RAM, BAGS OF ASSORTED EXTRICATION BLOCKS
BOX OF ASSORTED HOOKS AND CHAINS
HYDRAULIC RESCUE SPREADER / CUTTER WITH
WRECKING BAR, 100' HYDRALIC RESCUE TOOL REEL

HAZ-MAT

PERSONAL CO DETECTOR, DRY ABSORBENT, ABSOR-
BENT PADS, ENCAPSULATING LEVEL B SUITES,
TYVEK SUITS, SAFETY GLASSES, NITYL GLOVES,
20 & 60 GALLON CONTAINMENT POOLS, CHEM-TAPE
PLUG & DIKE, LEAK PATCHING MATERIALS

MEDICAL

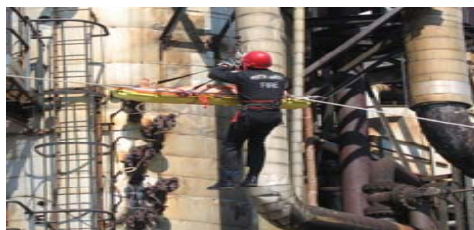
LONG BACKBOARDS, MEDICAL KIT, MCI KIT, RESPI-
RATORY KIT, PEDIATRIC KIT, CERVICAL COLLARS,
MEDICAL O2 TANKS, BLANKET ROLLS,
LIFEPAK DEFIBRILLATOR, SUCTION UNIT,
SHARPS CONTAINER, LATEX GLOVES,
ASSORTED BOARD SPLINTS, CLOSED REEVES,
BODY CONTAINMENT BAG, SHROUD KIT,
TRAUMA DRESSINGS, CRAVATS, BIO-HAZARD BAGS,
DISPOSABLE BLANKETS, COLD COMPRESS
FACE SHIELDS, GLUCOSE TUBES, STERILE WATER,
"D" SIZE O2 TANKS, ADULT & PEDIATRIC BVM,

CONFINED SPACE

SKED-EVAC, TRIPOD, 4:1 HAULING SYSTEM

FIREFIGHTING

30 MINUTE SCBA, HAND LITES,
RIT PACK (SCBA, ROPE, & SLING)
4' & 6' HOOKS, CROW BARS, PRY BAR, BOLT CUTTERS
PICK HEAD AXE, FLAT HEAD AXE, HALIGAN BAR,
SHOVEL, RAKE, BROOM
PARTNER CIRCULAR POWER SAW
Wood/Metal/Masonry Capability.



Water Rescue Car 6 and Marine Units

CAR 6
1988 Dodge Utility Body

EQUIPMENT INVINTORY

14' ROW BOAT WITH MOTOR (5hp),
1 FLOATABLE PUMP, 150' 2 1/2" HOSE,
30' INFLATABLE RESCUE DOCK,
GENERATOR (2kw) WITH TWO QUARTZ LIGHTS,
1 COLD WATER IMMERSION SUIT,
2 ICE COMMANDEER SUITS,
300' TEATHER LINE, 300' POLY PROPYLENE
ROPE, 1 COLLAPSABLE BOAT HOOK,
1 RESCUE CAN, 2 SCBA UNITS, 1 FIRST AID KIT.



MARINE UNITS

17' BOSTON WHALER

- In Water May—October
- 75 hp Outboard
- On Board Generator & Quartz Lighting
- UHF & VHF Radio Communications



PERSONAL WATERCRAFT

- Kawasaki
3 Person Unit
- In Water
May—October

